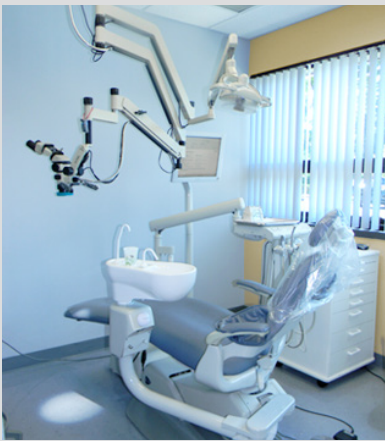


Join dozens of thriving medical practices at Cummings Center

Available medical suites
from 2,000 to 16,000 SF



Minutes to Beverly Hospital, North Shore Medical Center, and Lahey Medical Center

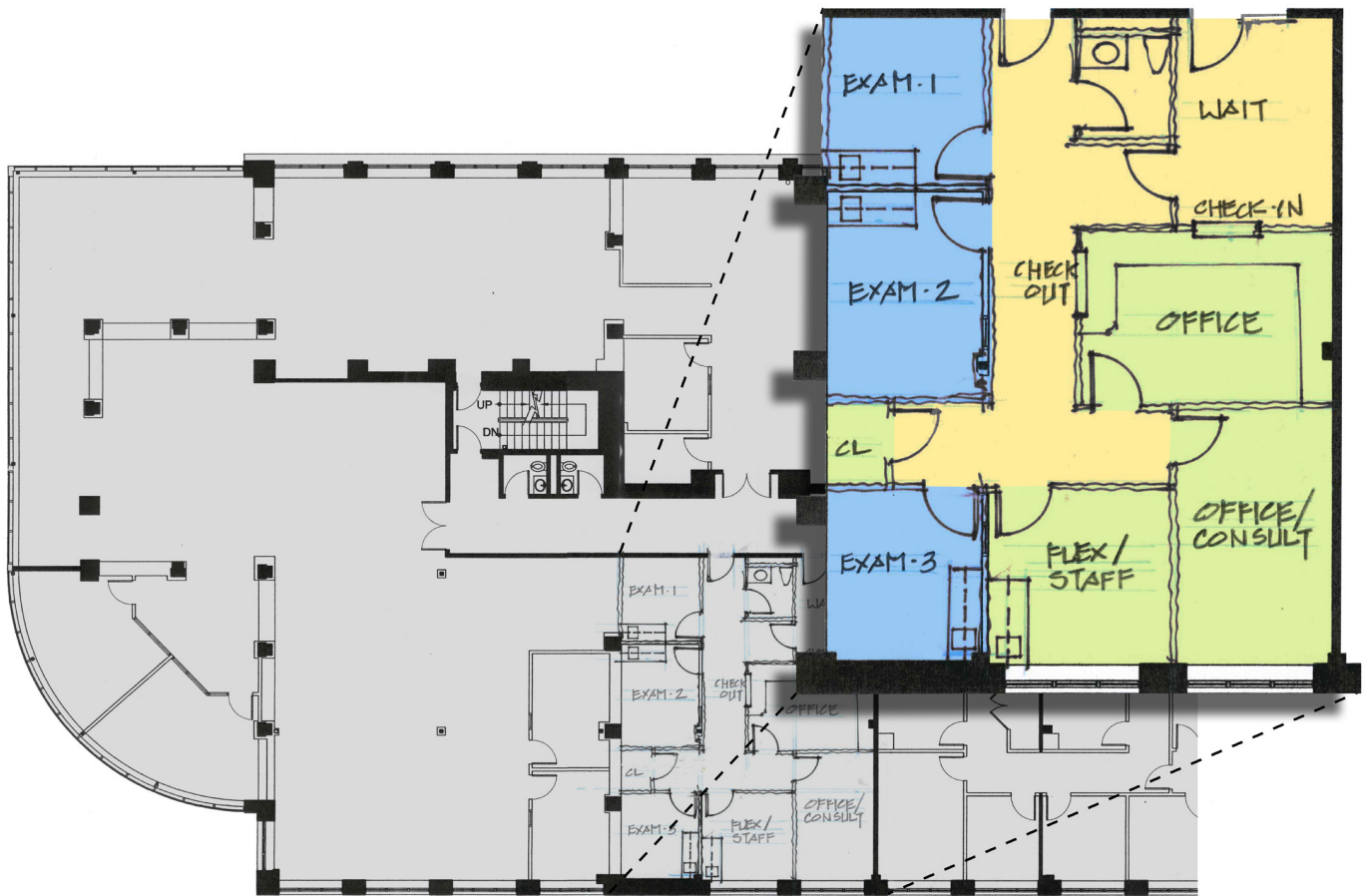
Join the wide variety of medical providers at Cummings Center's Medical Center. A large selection of medical suites are move-in ready or can be tailored by our design and construction teams.

Advantages to leasing with Cummings Properties

- Energy efficient, first-class buildings.
- Expansion space guarantee, ensuring a firm's growth will be accommodated.
- Comprehensive in-house services, including leasing, design, construction, and property management.
- Full-service leases that include common area maintenance, building-standard structural and mechanical maintenance, landscaping, snow removal, building insurance, base real estate taxes, and professional property management services.

For further information, contact:

Beverly Leasing
978-922-9000
beverlyleasing@cummings.com



Prototypical Medical Suite - 900 Cummings Center, Suite 225-U



Cummings Center Campus Conveniences

- Eight eateries
- Full-service fitness facilities
- Comprehensive recycling programs
- Free daytime surface and covered parking
- On-site child, adult day care, and dog day care
- U.S. Post Office, dry cleaner, salons, spas, and more
- Two banks and many professional and healthcare services
- Waterfront nature trails, picnic areas, parks, and two scenic ponds

Cummings Center Location and Access

- 18 miles north of Boston
- Easy access to Routes 1 and 95
- One mile from Route 128 at Routes 1A and 62
- Close to Beverly Hospital and North Shore Medical Center
- On-site MBTA/CATA bus stop, nearby commuter rail and airport, and dedicated bicycle storage